



## Victoria Mill, Houldsworth Street, Reddish, Stockport

£1,400 PCM

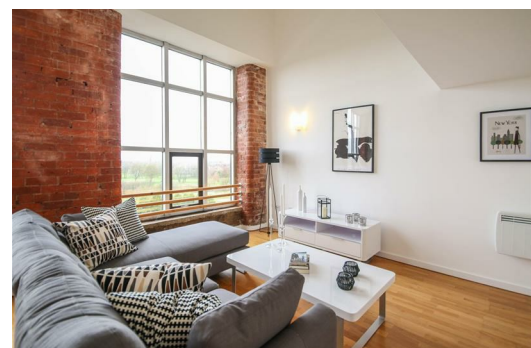
If you fancy living somewhere with oodles of charm and character, this three bed apartment within an award-winning Victorian mill conversion is right up your street.

Featuring spacious open plan living/kitchen space, this fully furnished apartment comprises three double bedrooms complete with a mezzanine level - a rarity in most period conversions. In short, this property truly offers modern contemporary living with fantastic transport links. So fantastic, that the train station is just 0.4 miles from the development - in simple terms, that's just a quick 8 minute stroll - perfect for those commuting into Stockport, Manchester city centre and the surrounding areas.

Aside from stunning views across the golf course and Manchester skyline, tenants benefit from an abundance of amenities. A friendly 24-hour concierge, dedicated bike storage, elevator to all floors (to save your legs), and a secure entry system are just a few of the key USPs of this beautiful development. There's also an on-site gym - a huge bonus for those 'leg days' where it's a mission just to get home!

This property really needs to be seen to be appreciated. Each apartment within this conversion is different, with its own individual charm. With secure private parking and more facilities than you can shake a stick at, there's not much more you could want in a property.

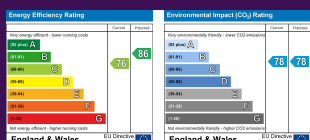
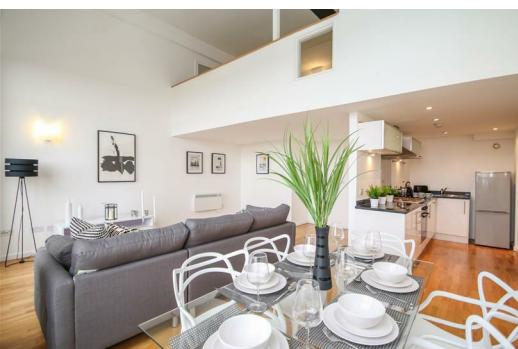
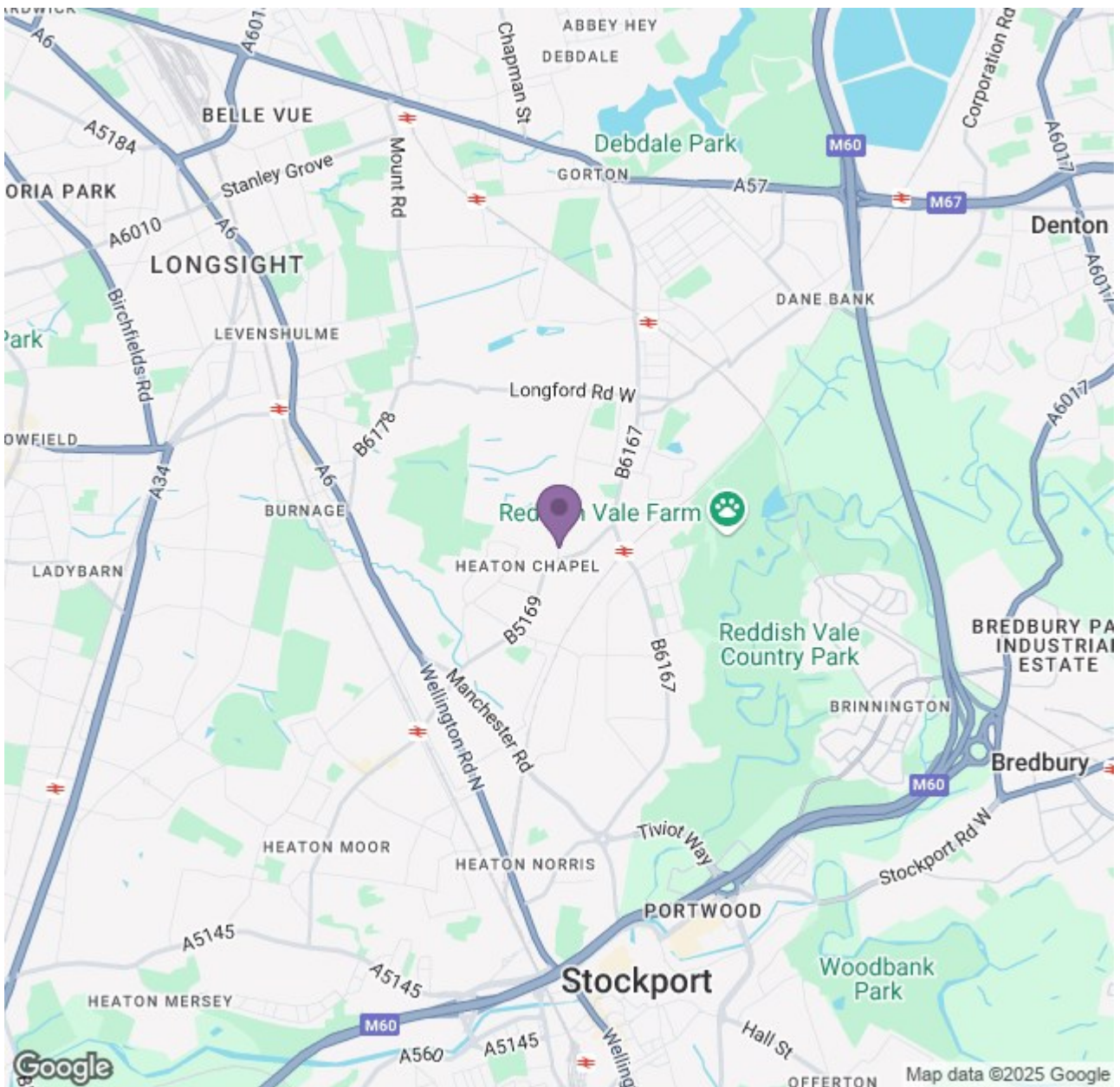
If you're interested in having a closer look, or have any questions, do get in touch. And just so you know, the pictures for this apartment are for marketing purposes only, so the internal fixtures, fittings and furnishings may vary.





# Ascend

Built on higher standards



# Ascend

Built on higher standards